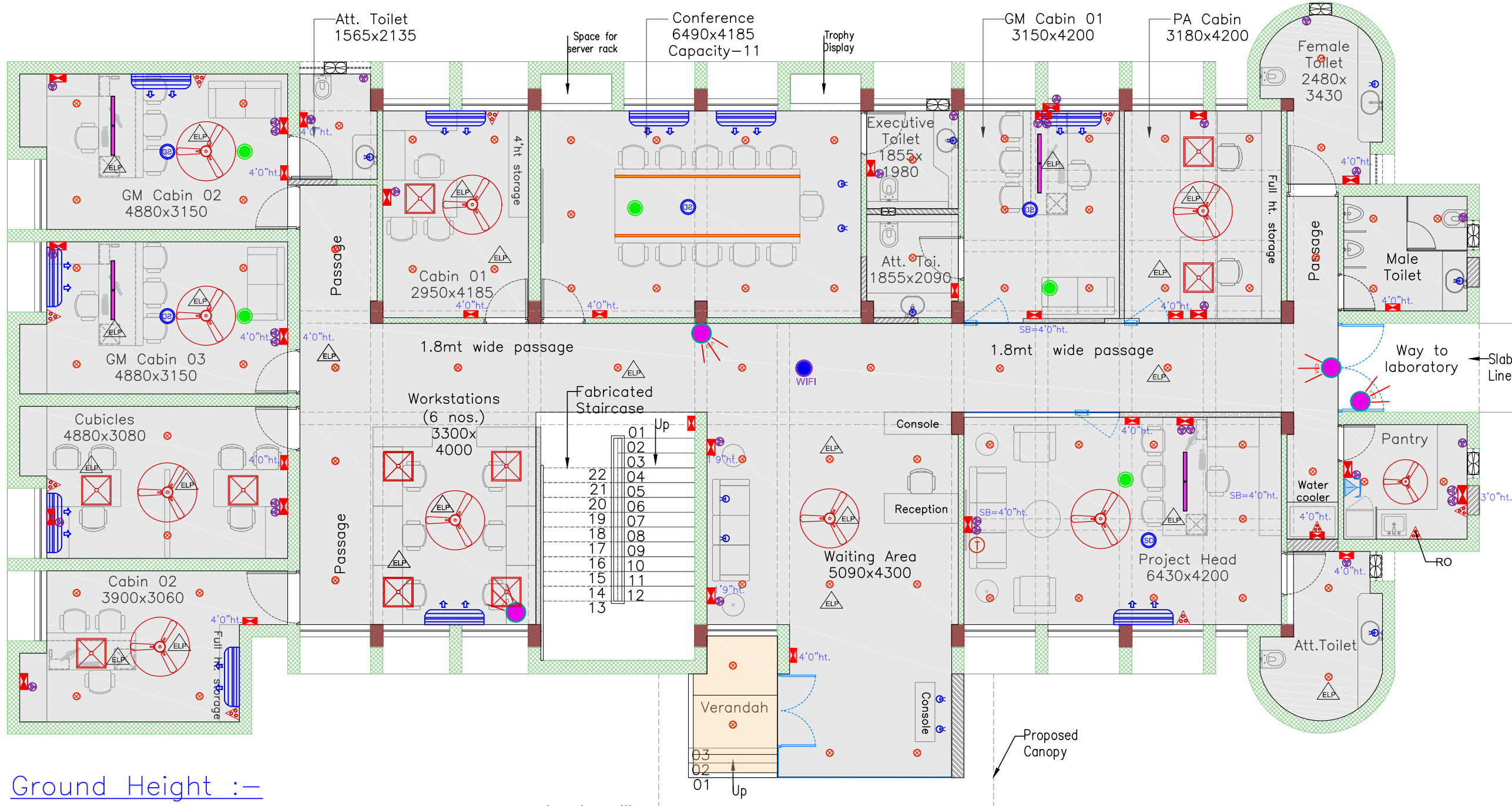


LAST SAVED BY: kparikh 19/5/25 10:45 AM

This drawing is property of Mamta Shah & Associates. Without our prior consent, it must be neither copied nor made available to third parties for the purpose other than for which it is meant.



Ground Height :-
Finished floor to bottom Slab height-3.25 m(10'-7")
Primary Bottom Beam height-2.650 m (8'-8")
Door Lintel = 7'-0" height

Lighting fixture Legend	
Symbol	Description
	Recessed mounted down lighter
	15w-18w Recess Mounted IP54 Spotlight downlighter
	Recessed 1.2m Led Hanging Profile light
	Recessed Fan point
	2*2 Recessed mounted Down lighter
	Continuous Length Aluminum Profile Led Recessed Linear light

Partition Legend	
Hatch	Description
	Full Height Partition Gypsum Partition (60min. fire rating): 100mm thick
	Thin Profile Glass Partition
	Existing Wall

Switch board Legend	
Symbol	Description
	15 - AMP Plug point
	Main Switch Board
	5 - AMP Plug point
Note:- Switch board height mentioned from floor finish level.	

HVAC Legend	
Symbol	Description
	Proposed Hi wall Split ac
Note:-Out door Unit Location on terrace.	

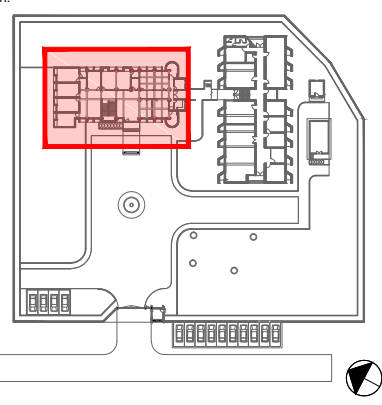
Ceiling material Legend	
Hatch	Material finish
	Plain gypsum board MRFR grade ceiling
	ACP Woody ceiling

ELV Legend	
Symbol	Fixture
	Smoke Detector
	CCTV
	WIFI
	Speaker

Note :

R4	19-05-25	SC/PR	GMDC		Tender	KBP
R3	22-02-25	SC/PR	GMDC		Tender	KBP
R2	01-03-24	SC/PR	GMDC		Tender	KBP
R1	27-09-23	SC/PR	GMDC		Tender	KBP
R0	11-07-23	SC/PR	GMDC		Tender	KBP
Rev	Date	Issued	Issued to		Issued for	Author

Key Plan:



Project:

GMDC Township Development

Drawing:

RCP with Furniture Layout_ GF

Office Building

Sheet 01

Drawing Code:

2310_INT_TD_OFC_FLC_R4

Print Size:

A3

Scale:

1:100

File Title:

2310_INT_TD_OFC_FLC_R4

Project Code:	MSA 2310	Project Type:	ARC & INT	Location:	Ambaji
Print Date:	19-May-25	Drawn By:	K Parikh	Checked By:	K Patel
		Approved By:	M Shah		

19-May-25

K Parikh

K Patel

M Shah

MAMTA SHAH & ASSOCIATES

Architects & Interior Designers

C-12, Chanakyapuri Society,
Chanakyapuri, Cher Rasta,
New Sana Road, Baroda

Ph. No. +91 985 271267 / 2710967

mamta@msain.com / www.msain.com

Client:

Gujarat Mineral Development corporation

GMDC